

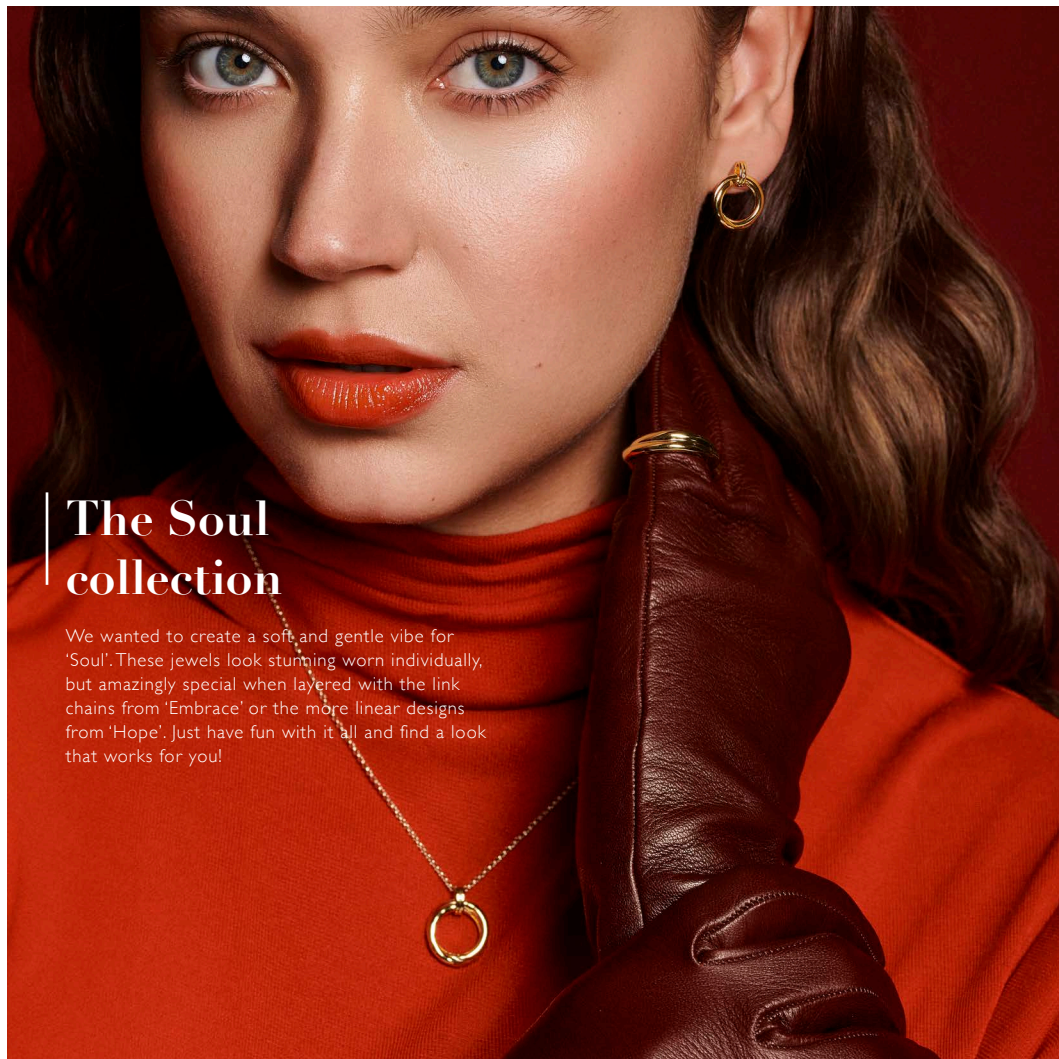


HOT DIAMONDS
x Golden Edit

Autumn Winter 2024



Welcome to
HOT DIAMONDS *x* Golden Edit
Autumn/Winter 2024



The Soul collection

We wanted to create a soft, and gentle vibe for 'Soul'. These jewels look stunning worn individually, but amazingly special when layered with the link chains from 'Embrace' or the more linear designs from 'Hope'. Just have fun with it all and find a look that works for you!

All designs are in either rhodium or 18ct gold-plated 925 sterling silver with at least one real diamond.
Rings available in sizes XS to XL.

HOT DIAMONDS *x* Golden Edit / Soul

NEW



AURA EARRINGS
£95 (DE811)



AURA HOOP EARRINGS
£95 (DE812)



AURA STUD EARRINGS
£95 (DE813)



AURA PENDANT
chain: 16-18" (40-45cm)
£95 (DP1022)



AURA RING
£135 (DR292)

All designs are in either rhodium or 18ct gold-plated 925 sterling silver with at least one real diamond.
Rings available in sizes XS to XL.

NEW



ILLUMINATE STUD EARRINGS
£90 (DE809)



ILLUMINATE PENDANT
chain: 16-18" (40-45cm)
£115 (DPI020)



ILLUMINATE DROP EARRINGS
£145 (DE810)



ILLUMINATE PENDANT - LARGE
chain: 16-18" (40-45cm)
£140 (DPI021)

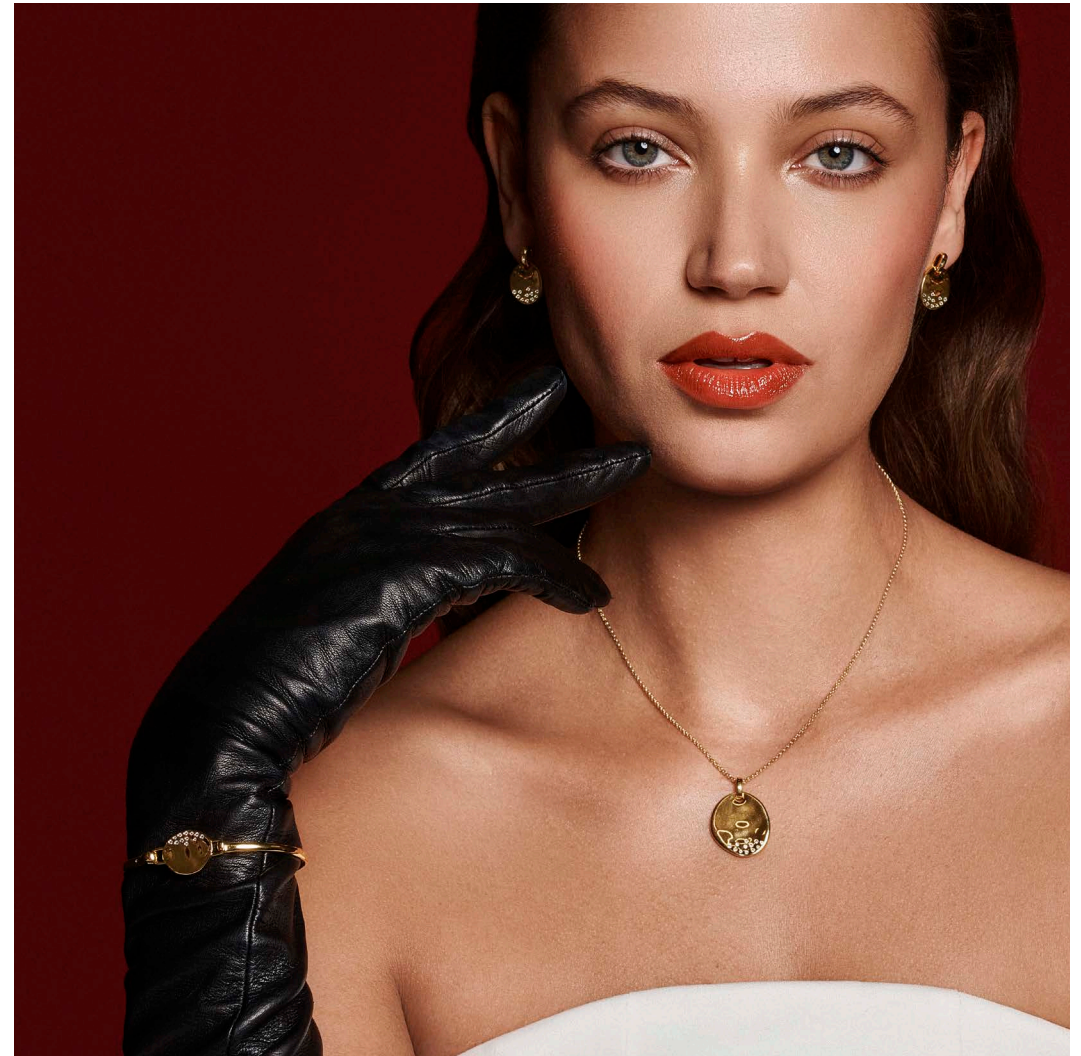


ILLUMINATE BRACELET
£145 (DL695)



ILLUMINATE BANGLE
£225 (DC213)

All designs are in either rhodium or 18ct gold-plated 925 sterling silver with at least one real diamond.
Rings available in sizes XS to XL.



All designs are in either rhodium or 18ct gold-plated 925 sterling silver with at least one real diamond.
Rings available in sizes XS to XL.



All designs are in either rhodium or 18ct gold-plated 925 sterling silver with at least one real diamond.
Rings available in sizes XS to XL.



**DESIRE STUD
EARRINGS**
£65 (DE781)



**DESIRE HOOK
EARRINGS**
£110 (DE782)



DESIRE RING
£95 (DR276)



DESIRE STATEMENT RING
£110 (DR277)

All designs are in either rhodium or 18ct gold-plated 925 sterling silver with at least one real diamond.
Rings available in sizes XS to XL.

HOT DIAMONDS *x* Golden Edit / Soul



DESIRE PENDANT
chain: 16-18" (40-45cm)
£95 (DP967)



DESIRE BANGLE
£195 (DC186)



All designs are in either rhodium or 18ct gold-plated 925 sterling silver with at least one real diamond.
Rings available in sizes XS to XL.

All designs are in either rhodium or 18ct gold-plated 925 sterling silver with at least one real diamond.
Rings available in sizes XS to XL.

HOT DIAMONDS *x* Golden Edit / Soul



**TIDE STATEMENT
NECKLACE**
chain: 16-18" (40-45cm)
£295 (DN195)

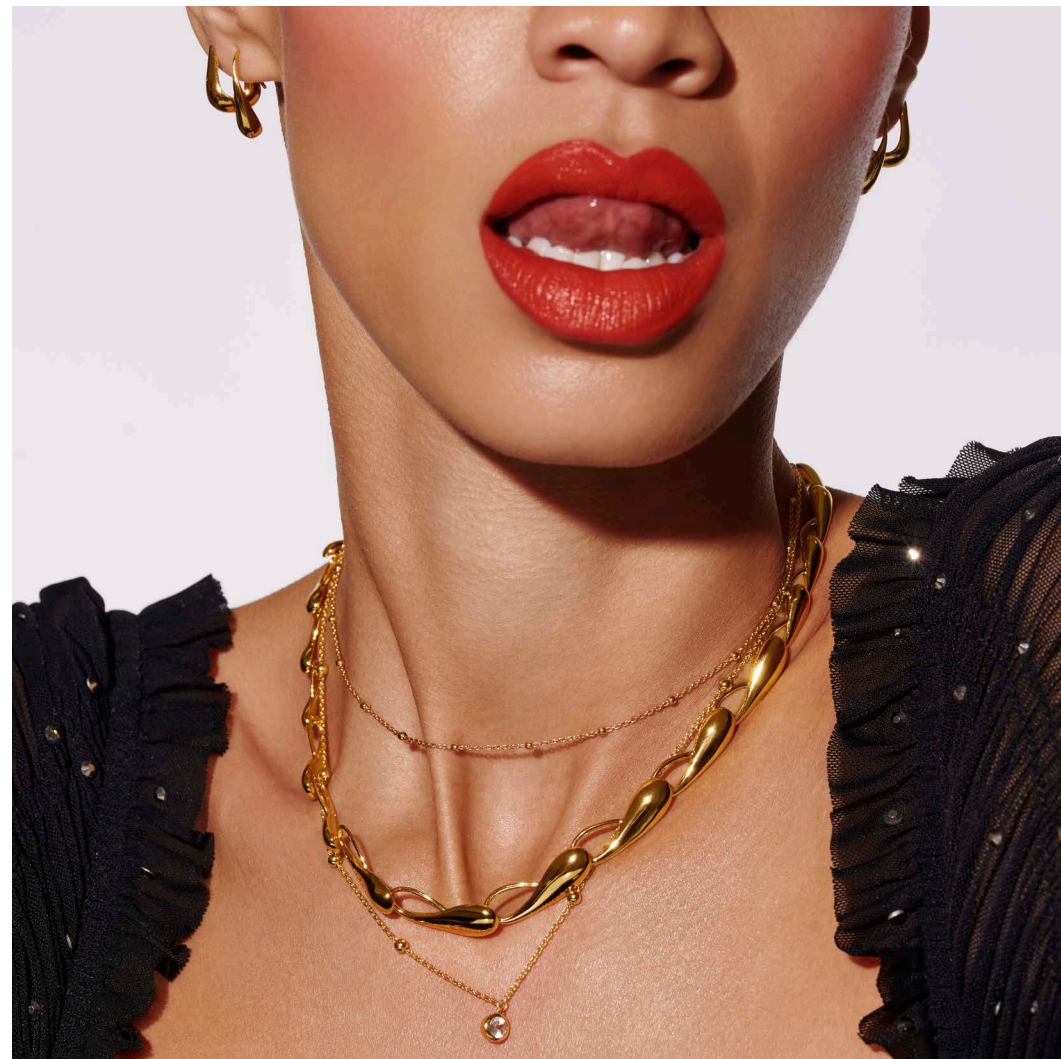


TIDE RING
£75 (DR282)



TIDE BRACELET
£190 (DL670)

All designs are in either rhodium or 18ct gold-plated 925 sterling silver with at least one real diamond.
Rings available in sizes XS to XL.



All designs are in either rhodium or 18ct gold-plated 925 sterling silver with at least one real diamond.
Rings available in sizes XS to XL.



All designs are in either rhodium or 18ct gold-plated 925 sterling silver with at least one real diamond.
Rings available in sizes XS to XL.



**HEART PENDANT -
MOTHER OF PEARL**
chain: 16-18" (40-45cm)
£90 (DP1000)



**HEART STUD EARRINGS -
MOTHER OF PEARL**
£85 (DE790)



**HEART BANGLE - MOTHER
OF PEARL**
£175 (DC193)



**HEART RING -
MOTHER OF PEARL**
£90 (DR284)

All designs are in either rhodium or 18ct gold-plated 925 sterling silver with at least one real diamond.
Rings available in sizes XS to XL.



All designs are in either rhodium or 18ct gold-plated 925 sterling silver with at least one real diamond.
Rings available in sizes XS to XL.



LETTER 'A' PENDANT
chain: 16-18" (40-45cm)
£50 (DP939)



LETTER 'B' PENDANT
chain: 16-18" (40-45cm)
£50 (DP940)



LETTER 'C' PENDANT
chain: 16-18" (40-45cm)
£50 (DP941)



LETTER 'D' PENDANT
chain: 16-18" (40-45cm)
£50 (DP942)



LETTER 'E' PENDANT
chain: 16-18" (40-45cm)
£50 (DP943)



LETTER 'F' PENDANT
chain: 16-18" (40-45cm)
£50 (DP944)

All designs are in either rhodium or 18ct gold-plated 925 sterling silver with at least one real diamond.
Rings available in sizes XS to XL.



LETTER 'G' PENDANT
chain: 16-18" (40-45cm)
£50 (DP945)



LETTER 'H' PENDANT
chain: 16-18" (40-45cm)
£50 (DP946)



LETTER 'I' PENDANT
chain: 16-18" (40-45cm)
£50 (DP947)



LETTER 'M' PENDANT
chain: 16-18" (40-45cm)
£50 (DP951)



LETTER 'N' PENDANT
chain: 16-18" (40-45cm)
£50 (DP952)



LETTER 'O' PENDANT
chain: 16-18" (40-45cm)
£50 (DP953)



LETTER 'J' PENDANT
chain: 16-18" (40-45cm)
£50 (DP948)



LETTER 'K' PENDANT
chain: 16-18" (40-45cm)
£50 (DP949)



LETTER 'L' PENDANT
chain: 16-18" (40-45cm)
£50 (DP950)



LETTER 'P' PENDANT
chain: 16-18" (40-45cm)
£50 (DP954)



LETTER 'Q' PENDANT
chain: 16-18" (40-45cm)
£50 (DP955)



LETTER 'R' PENDANT
chain: 16-18" (40-45cm)
£50 (DP956)

HOT DIAMONDS *x* Golden Edit / Soul



LETTER 'S' PENDANT
chain: 16-18" (40-45cm)
£50 (DP957)



LETTER 'T' PENDANT
chain: 16-18" (40-45cm)
£50 (DP958)



LETTER 'U' PENDANT
chain: 16-18" (40-45cm)
£50 (DP959)



LETTER 'Y' PENDANT
chain: 16-18" (40-45cm)
£50 (DP963)



LETTER 'V' PENDANT
chain: 16-18" (40-45cm)
£50 (DP960)



LETTER 'W' PENDANT
chain: 16-18" (40-45cm)
£50 (DP961)



LETTER 'X' PENDANT
chain: 16-18" (40-45cm)
£50 (DP962)



LETTER 'Z' PENDANT
chain: 16-18" (40-45cm)
£50 (DP964)



All designs are in either rhodium or 18ct gold-plated 925 sterling silver with at least one real diamond.
Rings available in sizes XS to XL.

All designs are in either rhodium or 18ct gold-plated 925 sterling silver with at least one real diamond.
Rings available in sizes XS to XL.



All designs are in either rhodium or 18ct gold-plated 925 sterling silver with at least one real diamond.
Rings available in sizes XS to XL.



**BLACK ONYX OVAL
EARRINGS**
£110 (DE738)



**BLACK ONYX OVAL
PENDANT**
chain: 16-18" (40-45cm)
£95 (DP915)



**BLACK ONYX OVAL
RING**
£95 (DR257)

All designs are in either rhodium or 18ct gold-plated 925 sterling silver with at least one real diamond.
Rings available in sizes XS to XL.



**REVIVE TEARDROP
STUD EARRINGS**
£55 (DE754)



**CALM MOTHER OF PEARL
STUD EARRINGS**
£50 (DE755)



**REVIVE STUD
EARRINGS**
£60 (DE757)



**WHITE TOPAZ
STUD EARRINGS**
£50 (DE759)



PETAL STUD EARRINGS
£40 (DE760)



**CALM MOTHER OF PEARL
STUD EARRINGS**
£75 (DE761)

All designs are in either rhodium or 18ct gold-plated 925 sterling silver with at least one real diamond.
Rings available in sizes XS to XL.



All designs are in either rhodium or 18ct gold-plated 925 sterling silver with at least one real diamond.
Rings available in sizes XS to XL.



All designs are in either rhodium or 18ct gold-plated 925 sterling silver with at least one real diamond.
Rings available in sizes XS to XL.



LUNAR LOCKET PENDANT
chain: 16-18" (40-45cm)
£95 (DP906)



**LUNAR LOCKET PENDANT
- LARGE**
chain: 18-20" (45-50cm)
£155 (DP907)



LUNAR STATEMENT RING
£150 (DR253)

All designs are in either rhodium or 18ct gold-plated 925 sterling silver with at least one real diamond.
Rings available in sizes XS to XL.



LUNAR CHOKER
chain: 13-15" (32-39cm)
£95 (DNI48)



**LUNAR PENDANT
LARGE**
chain: 18-20" (45-50cm)
£95 (DP838)

All designs are in either rhodium or 18ct gold-plated 925 sterling silver with at least one real diamond.
Rings available in sizes XS to XL.



LUNAR BRACELET
£75 (DL639)

LUNAR NECKLACE
chain: 16-18" (40-45cm)
£125 (DNI49)

LUNAR PENDANT
chain: 16-18" (40-45cm)
£90 (DP837)

All designs are in either rhodium or 18ct gold-plated 925 sterling silver with at least one real diamond.
Rings available in sizes XS to XL.

HOT DIAMONDS *x* Golden Edit / Soul



**CALM MOTHER OF PEARL
HUGGIES EARRINGS**
£120 (DE727)



**CALM MOTHER OF PEARL
CIRCLE PENDANT**
chain: 16-18" (40-45cm)
£95 (DP905)



**CALM MOTHER OF PEARL
NECKLACE**
chain: 16-18" (40-45cm)
£150 (DN166)



**CALM MOTHER OF PEARL
EARRINGS**
£95 (DE671)



**CALM MOTHER
OF PEARL PENDANT**
chain: 16-18" (40-45cm)
£110 (DP842)

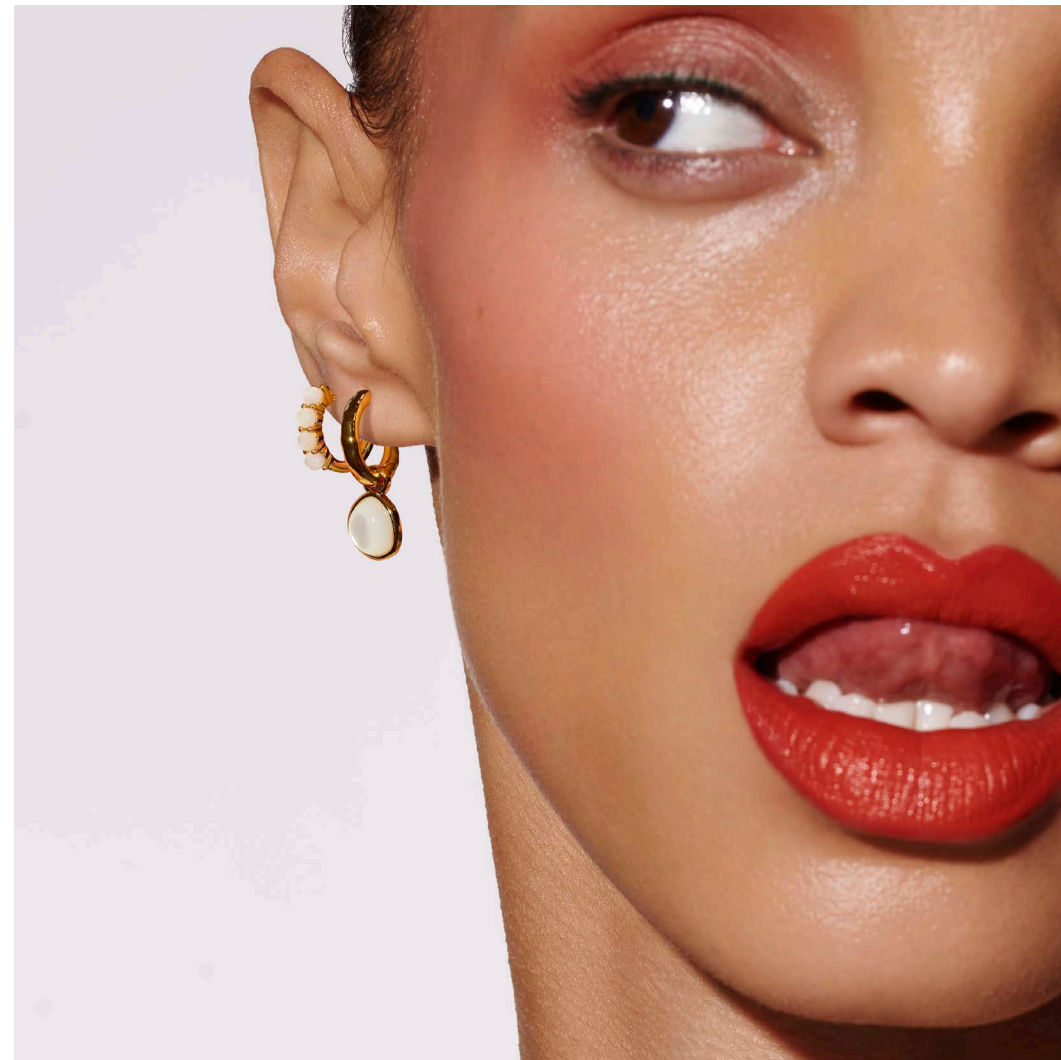


**CALM MOTHER
OF PEARL RING**
£95 (DR252)



**CALM MOTHER
OF PEARL RING**
£60 (DR231)

All designs are in either rhodium or 18ct gold-plated 925 sterling silver with at least one real diamond.
Rings available in sizes XS to XL.



All designs are in either rhodium or 18ct gold-plated 925 sterling silver with at least one real diamond.
Rings available in sizes XS to XL.



**CALM MOTHER OF PEARL
SQUARE EARRINGS**
£110 (DE714)



**CALM MOTHER OF PEARL
SQUARE PENDANT**
chain: 16-18" (40-45cm)
£95 (DP896)



**CALM MOTHER OF PEARL
PENDANT**
chain: 16-18" (40-45cm)
£110 (DP897)



**CALM MOTHER OF PEARL
SQUARE RING**
£95 (DR247)

All designs are in either rhodium or 18ct gold-plated 925 sterling silver with at least one real diamond.
Rings available in sizes XS to XL.



**CALM MOTHER OF PEARL
CHOKER**
chain: 32-39cm
£110 (DNI56)

**CALM MOTHER OF PEARL
NECKLACE**
chain: 16-18" (40-45cm)
£125 (DNI57)



**CALM MOTHER OF PEARL
LUNAR BRACELET**
£95 (DL647)



**CALM MOTHER OF PEARL
LUNAR NECKLACE**
chain: 16-18" (40-45cm)
£150 (DNI58)

All designs are in either rhodium or 18ct gold-plated 925 sterling silver with at least one real diamond.
Rings available in sizes XS to XL.



SOUL EARRINGS
£55 (DE668)



TWIST EARRINGS
£75 (DE660)



**SOUL STATEMENT
EARRINGS**
£125 (DE672)



FLUID EARRINGS
£110 (DE726)



FLUID PENDANT
chain: 16-18" (40-45cm)
£85 (DP904)



SOUL RING
£50 (DR227)



HEART PENDANT
chain: 16-18" (40-45cm)
£85 (DP918)



SOUL PENDANT
chain: 16-18" (40-45cm)
£85 (DP839)



BEACH NECKLACE
chain: 13-15" (32-39cm)
£105 (DN150)



BEACH EARRINGS
£55 (DE659)



ENTWINE EARRINGS
£85 (DE673)



ENTWINE BANGLE
£130 (DL640)



**ESSENCE HEART
STUD EARRINGS**
£90 (DE807)



**ESSENCE HEART
HUGGIE EARRINGS**
£110 (DE808)

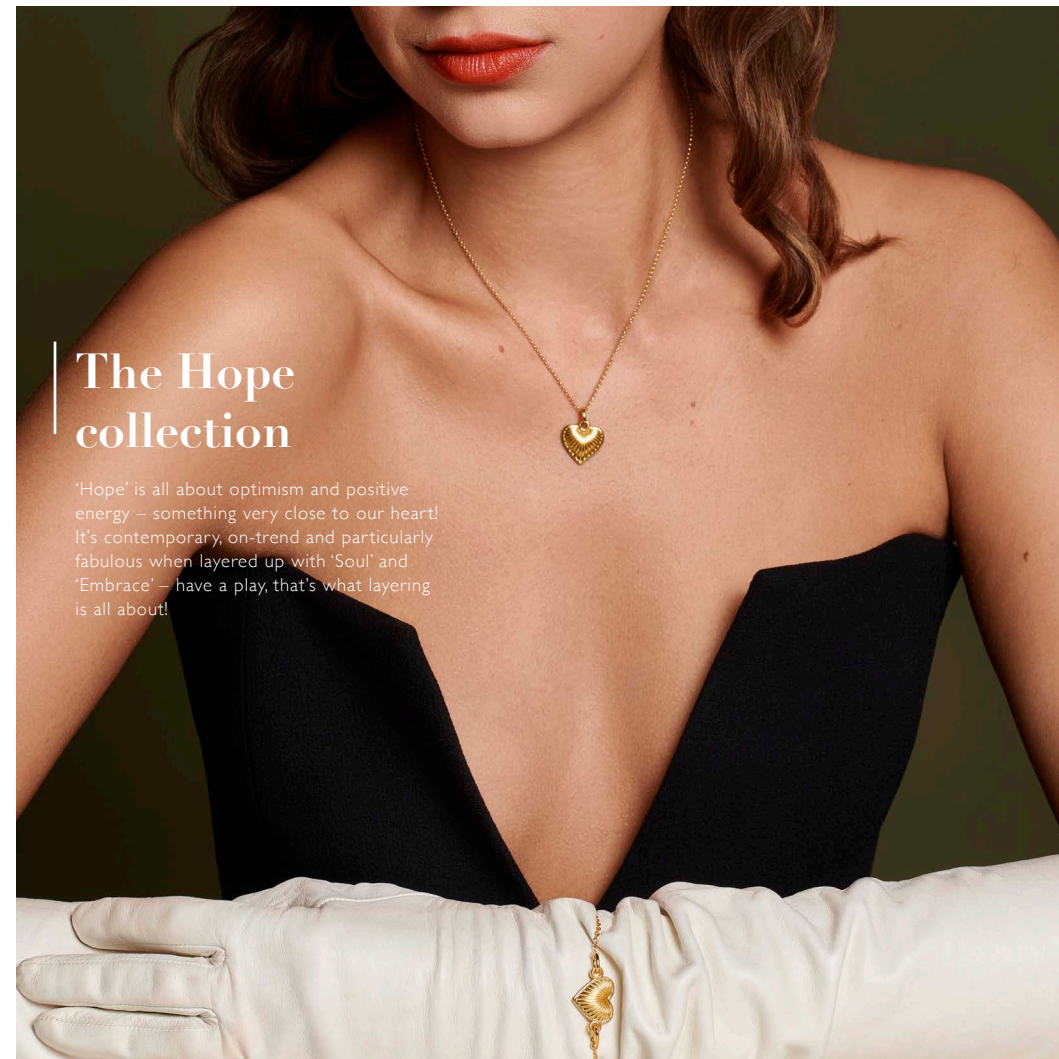


**ESSENCE HEART
BRACELET**
£145 (DL694)



**ESSENCE HEART
NECKLACE**
chain: 16-18" (40-45cm)
£120 (DP1019)

All designs are in either rhodium or 18ct gold-plated 925 sterling silver with at least one real diamond.
Rings available in sizes XS to XL.



The Hope collection

'Hope' is all about optimism and positive energy – something very close to our heart! It's contemporary, on-trend and particularly fabulous when layered up with 'Soul' and 'Embrace' – have a play, that's what layering is all about!

All designs are in either rhodium or 18ct gold-plated 925 sterling silver with at least one real diamond.
Rings available in sizes XS to XL.



SPIRIT EARRINGS
£110 (DE677)



SPIRIT PENDANT
chain: 16-18" (40-45cm)
£95 (DP847)



**BLACK ONYX
EARRINGS**
£120 (DE737)



**BLACK ONYX
PENDANT**
chain: 16-18" (40-45cm)
£95 (DP914)



**BLACK ONYX
SIGNET RING**
£95 (DR256)



All designs are in either rhodium or 18ct gold-plated 925 sterling silver with at least one real diamond.
Rings available in sizes XS to XL.



**STARBURST
STUD EARRINGS**
£40 (DE752)



**WHITE TOPAZ MICRO
STUD EARRINGS**
£40 (DE753)



**HEXAGON WHITE TOPAZ
EARRINGS**
£45 (DE756)



**WHITE TOPAZ GRADUATED
STUD EARRINGS**
£50 (DE758)



**REVIVE SQUARE
STUD EARRINGS**
£75 (DE762)

All designs are in either rhodium or 18ct gold-plated 925 sterling silver with at least one real diamond.
Rings available in sizes XS to XL.

HOT DIAMONDS *x* Golden Edit / Hope



**REVIVE MALACHITE
SQUARE EARRINGS**
£125 (DE713)



**REVIVE MALACHITE
EARRINGS**
£150 (DE676)



**REVIVE MALACHITE
SQUARE PENDANT**
chain: 16-18" (40-45cm)
£95 (DP844)



**REVIVE MALACHITE
PENDANT**
chain: 16-18" (40-45cm)
£95 (DP845)

All designs are in either rhodium or 18ct gold-plated 925 sterling silver with at least one real diamond.
Rings available in sizes XS to XL.



All designs are in either rhodium or 18ct gold-plated 925 sterling silver with at least one real diamond.
Rings available in sizes XS to XL.

HOT DIAMONDS *x* Golden Edit / Hope



REVIVE MALACHITE RING
£95 (DR248)



REVIVE MALACHITE NECKLACE
chain: 16-18" (40-45cm)
£110 (DN155)



REVIVE MALACHITE BRACELET
£85 (DL646)

All designs are in either rhodium or 18ct gold-plated 925 sterling silver with at least one real diamond.
Rings available in sizes XS to XL.

HOT DIAMONDS *x* Golden Edit / Hope



HOPE OCTAGON PENDANT
chain: 16-18" (40-45cm)
£95 (DP846)



RADIANT PENDANT
chain: 16-18" (40-45cm)
£110 (DP921)



HOPE EARRINGS
£85 (DE679)

All designs are in either rhodium or 18ct gold-plated 925 sterling silver with at least one real diamond.
Rings available in sizes XS to XL.



All designs are in either rhodium or 18ct gold-plated 925 sterling silver with at least one real diamond.
Rings available in sizes XS to XL.



BELIEVE PENDANT
chain: 18-20" (45-50cm)
£125 (DP840)



HOPE BAR PENDANT
chain: 16-18" (40-45cm)
£95 (DP848)



BELIEVE EARRINGS
£95 (DE685)



**BELIEVE PENDANT
SMALL**
chain: 16-18" (40-45cm)
£95 (DP841)

All designs are in either rhodium or 18ct gold-plated 925 sterling silver with at least one real diamond.
Rings available in sizes XS to XL.

The Embrace collection

I absolutely adore mixing up delicate chokers with bold links and statement chains and that's what 'Embrace' is all about. Experiment with different lengths, precious metal finishes and make it yours! You're going to look amazing!

x Jac Jossa



Some designs are 18ct gold-plated 925 sterling silver. Exceptionally heavy gauge chains may be gold plated brass or bronze. Individual chains may not contain a diamond.



**OCEAN BRACELET
WHITE**
£35 (DL655)



**OCEAN BRACELET
PINK**
£35 (DL656)

Some designs are 18ct gold-plated 925 sterling silver. Exceptionally heavy gauge chains may be gold plated brass or bronze. Individual chains may not contain a diamond.



**OCEAN BRACELET
ORANGE**
£35 (DL657)



**OCEAN BRACELET
TURQUOISE**
£35 (DL658)

Some designs are 18ct gold-plated 925 sterling silver. Exceptionally heavy gauge chains may be gold plated brass or bronze. Individual chains may not contain a diamond.



**OCEAN BRACELET
LILAC**
£35 (DL659)



**OCEAN BRACELET
RAINBOW**
£35 (DL660)

Some designs are 18ct gold-plated 925 sterling silver. Exceptionally heavy gauge chains may be gold plated brass or bronze. Individual chains may not contain a diamond.

HOT DIAMONDS *x* Golden Edit / Embrace



**EMBRACE SMALL
PAPERCLIP
CHAIN - 40-45CM**
£40 (CHI20)



**EMBRACE
STATEMENT
CHAIN - 45CM**
£150 (CHI19)

Some designs are 18ct gold-plated 925 sterling silver. Exceptionally heavy gauge chains may be gold plated brass or bronze. Individual chains may not contain a diamond.



Some designs are 18ct gold-plated 925 sterling silver. Exceptionally heavy gauge chains may be gold plated brass or bronze. Individual chains may not contain a diamond.



**BEADED CABLE
CHAIN - 32-39CM**
£30 (CH097)



**BEADED CABLE
CHAIN - 40-45CM**
£35 (CH098)



**OVAL SNAKE
CHAIN - 40-45CM**
£95 (CH101)



**OVAL CABLE
CHAIN - 40-45CM**
£65 (CH106)



**DROPLET CABLE
CHAIN - 32CM**
£45 (CH108)

Some designs are 18ct gold-plated 925 sterling silver. Exceptionally heavy gauge chains may be gold plated brass or bronze. Individual chains may not contain a diamond.



**SQUARE WIRED
BRONZE CHAIN
50CM**
£75 (CH110)



**TWISTED WIRED
BRONZE CHAIN
50CM**
£65 (CH111)



**STATEMENT
ROUND BRONZE
CHAIN - 50CM**
£50 (CH112)

Some designs are 18ct gold-plated 925 sterling silver. Exceptionally heavy gauge chains may be gold plated brass or bronze. Individual chains may not contain a diamond.

Just to let you know...

- The majority of the Hot Diamonds x Jac Jossa collection has been crafted in 925 sterling silver.
- Every piece of Hot Diamonds x Jac Jossa has been 18ct Yellow Gold plated.
- Every design of Hot Diamonds x Jac Jossa is adorned with at least one real diamond (except the chains).
- Every piece of Hot Diamonds x Jac Jossa comes with a personalised Jac Jossa gift box and bag.
- Every piece of the Hot Diamonds x Jac Jossa comes with a two year guarantee.

| Gift Wrap

Hot Diamonds is always beautifully presented. Ideal for gifting and self-treats.



HOT DIAMONDS *x* Golden Edit

| Brand Managers

■ Joan Raitt
T: 07717 861 262
E: joan.raitt@hdgroup.com

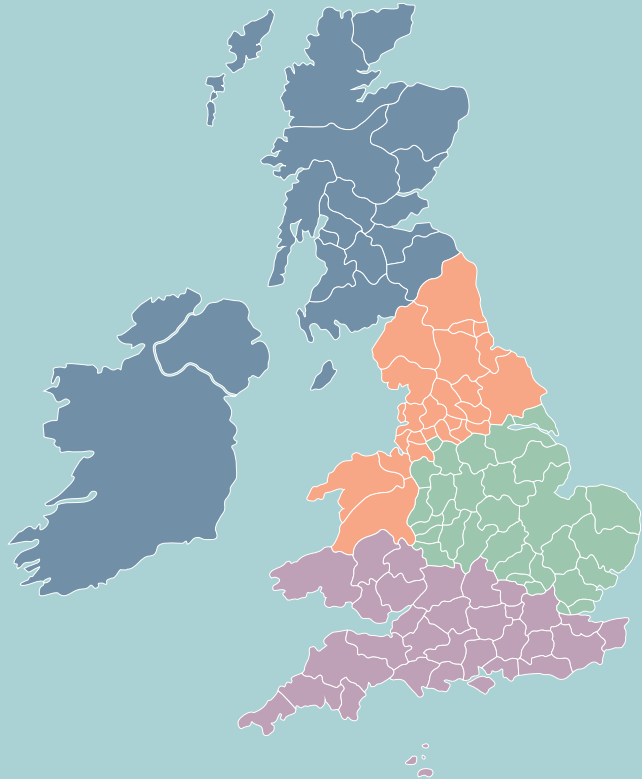
■ Chris McKenna
T: 07485 394 789
E: christine.mckenna@hdgroup.com

■ Chloe Lewis
T: 07717 508 603
E: chloe.lewis@hdgroup.com

■ Andrew Lewis
T: 07717 861 669
E: Andrew.Lewis@HDGroup.com

| Head Office

Customer Services
T: 0118 975 3331
E: cs@hdgroup.com



hotdiamonds.com